

## Logging cores on the MSCL-XYZ

### Preparing core sections

Clean the surface of the core section and cover with a layer of cling film, taking care to smooth out the film. The sediment surface should be as level and even as possible so the sensor can sit flat and make good contact.

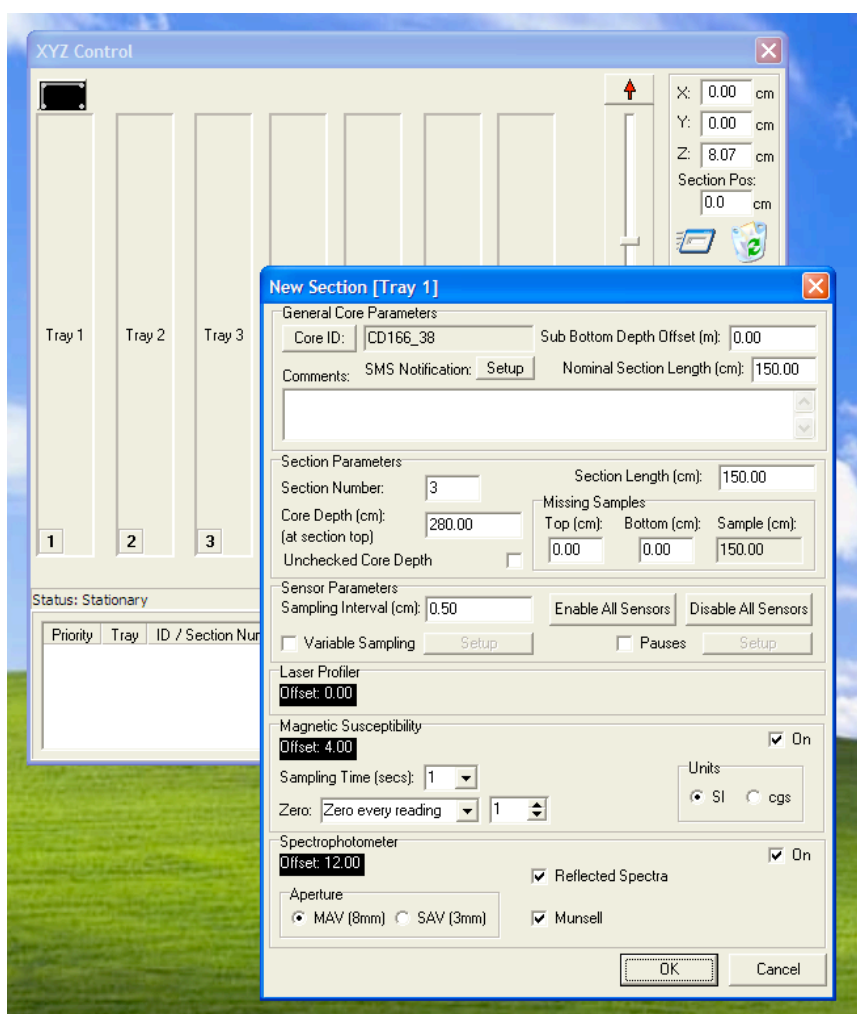
### Starting up

Open the Geotek XYZ MSCL software using the shortcut on the desktop. Click “Log New Core” and the ‘XYZ Control’ window will open.

Drag the “New” icon to the appropriate tray (1-7) and a new window will open.

Enter “Core ID”, “Section Length”, “Section Number”, and “Sampling Interval” “Variable Sampling” can be used to miss sections, e.g. cracks or slumps in the core

When all sections have been entered, click “Begin Log” and the logger will work its way through all the loaded trays. A new display screen opens to show data as it’s acquired.



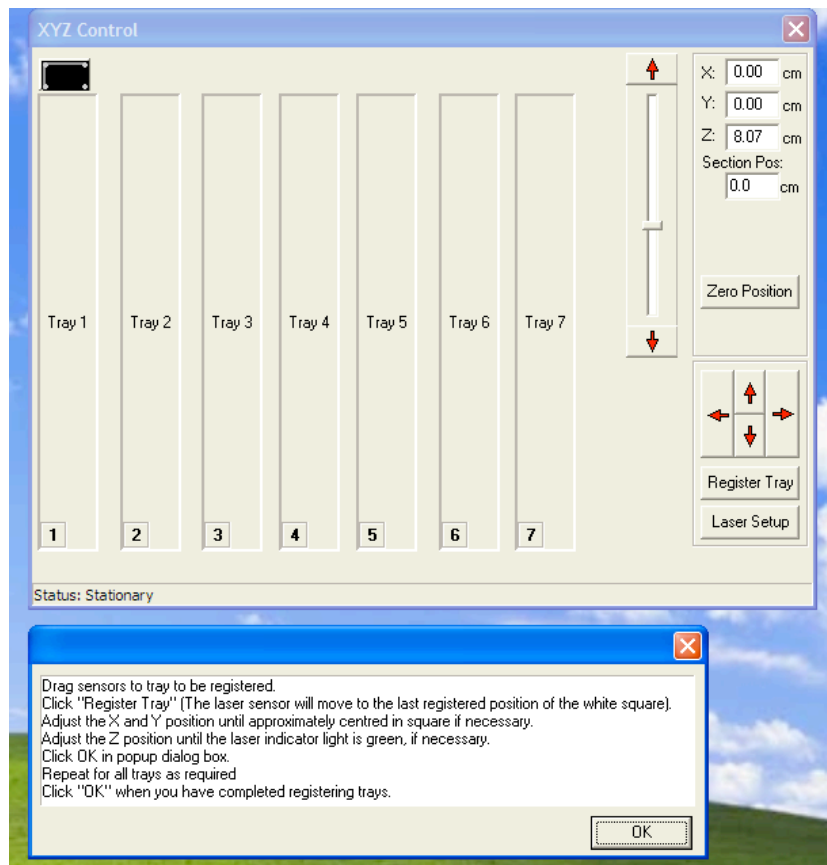
## Registering sample trays

If the surface of the core section is more than a couple of mm higher or lower than the tray platform, adjust the platform height and register the trays as described.

- Open the software and click on “Setup” and then select “Register Tray Positions”.



- This screen should appear:



- Follow the on screen instructions.

## Zeroing the logger

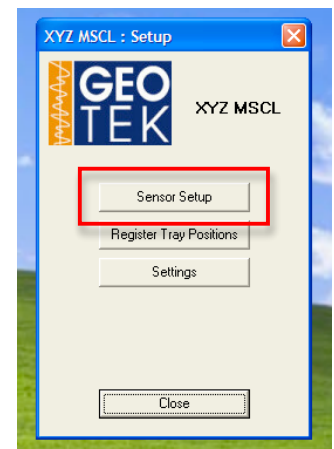
In normal circumstances the XYZ logger should not need zeroing, but occasionally this is required, e.g. if the position is adjusted manually, or after a complete power down.

Click on “Zero Position” on the main screen in the software, then follow the on screen instructions and use the controls on the front of the system to manually position the logger slightly off the minimum limits in X, Y and Z axes. The logger will then move towards the limit in each axis to establish its ‘zero’ position.

## Calibrating the spectrophotometer

This does not need doing regularly and the software should prompt you if there is a problem.

- In the “Setup” menu click on “Sensor Setup”
- Click on “Zero Calibration” and follow the on screen instructions to carry out the background calibration. Click on “White Calibration” to do the same using a white tile.
- 



## Exporting data

Click on “File” in the display screen and then “Export to ASCII”.

The file will be exported as a .csv file, which can be opened in Excel.

If an image of the display is required you will need to take a screen shot as only numerical values are exported.

